

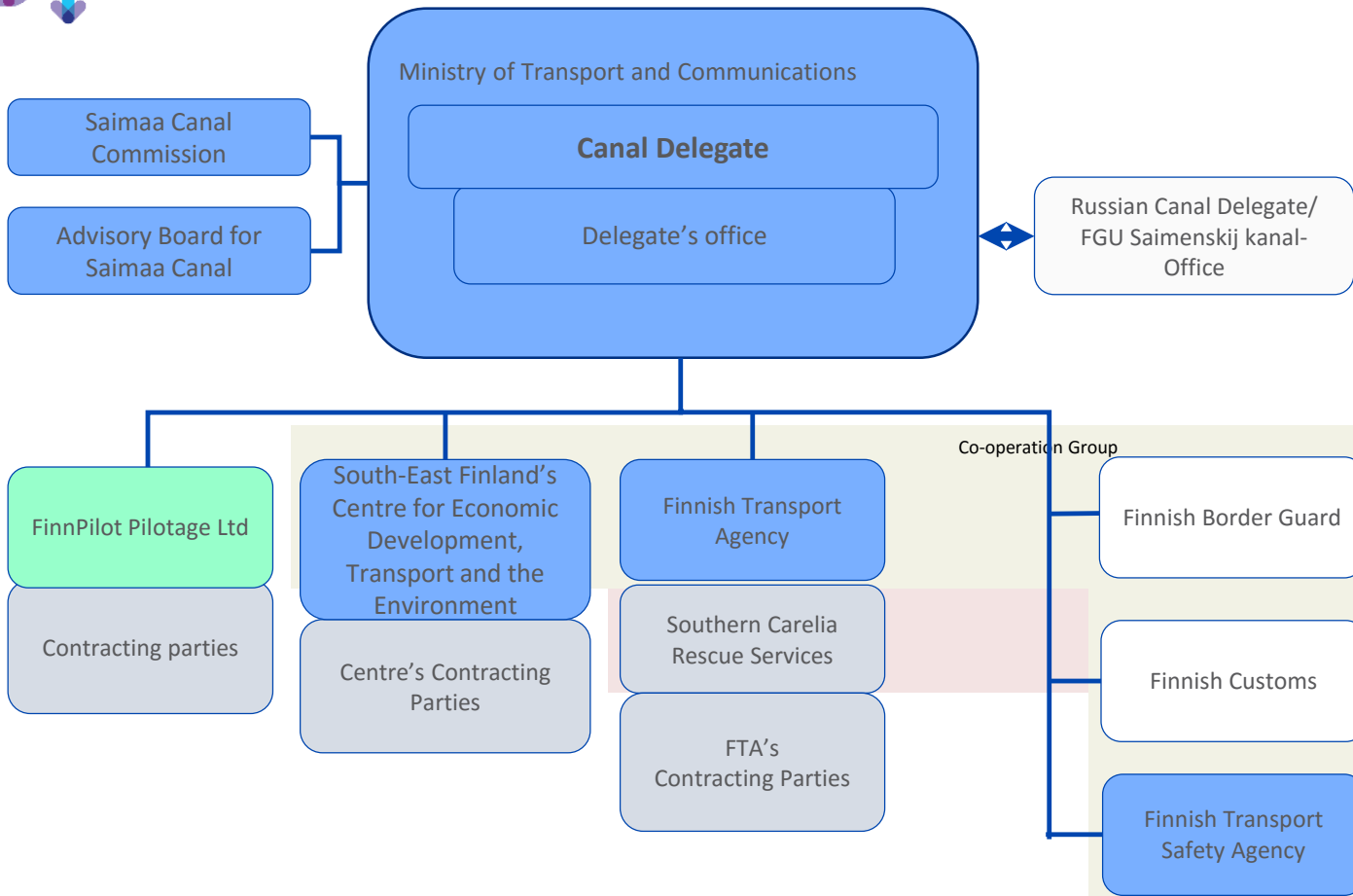


Saimaa Canal – Co-operation with Stakeholders

Olli Holm, Senior Advisor, Finnish Transport Agency



Big Picture





Advisory Board for Saimaa Canal

The task of the advisory board is to give opinions, statements and development proposals on the traffic in the Saimaa Canal and the Saimaa region and to assist the Canal Delegate in development work.

- Chair is the Canal Delegate
- 36 representatives of the industry, waterborne transport operators and region
- Certain authorities and Ministries also represented



Canal Commission and Co-operation Group

Canal Commission

- Commission helps the Canal Delegate in fulfilling the requirements of the canal agreement between Finland and Russia
- Delegate is the chair
- Representatives from two Ministries, Border Guard, Customs and FTA

Co-operation Group

- Group of Finnish local authorities
- Ensures the fluent co-operation of authorities
- Chaired by the Ministry of Transport and Communications



Finnish Transport Agency's Co-operation with Stakeholders



Transport Needs of the Business Life

Forest industry	Chemical industry	Heavy Metal industry	Manufacture of machines, equipment and vehicles
Production of fuels and oil products	The food industry and agriculture	Wholesale and retail trade	Other regionally important branches of industry
Logistics operators	Road transport companies	Railway operators	Shipping companies



Customer Relationship Management Models - Transport Needs Related to the Business Life

Big charterers
(named companies
/ heavy industry,
trade, others)

Prioritisation of
measures based on
understanding of
needs
*(whole transport
system, regardless
of transport
modes).*

Individual
cooperation with
companies

1-2 meetings per
year

Other cooperation
as required

Morning coffee
meetings

Newsletter

Logistics operators
and big transport
companies

Route and other
transport-related
information.
Discrepancies in the
level of service and
transport chain
challenges.

Individual
cooperation with
companies

1-2 meetings per
year

Other cooperation
as required

Morning coffee
meetings

Newsletter

Other charterers
and transport
companies

Familiarisation
with the FTA.
Seeking approval
for the measures
and prioritisations

No direct contacts
with companies.
Activities via the
representative
organisation of the
branch or at
morning coffee
meetings

Morning coffee
meetings

Newsletter

Representative
organisations of
the business life
and transport
companies

Effectiveness
through
cooperation.
Formulating a
shared vision for the
branch of industry.

Cooperation with the
representative
organisations

1-2 meetings per
year

Other cooperation as
required

Webpages /
information

Morning coffee
meetings

Newsletter



Saimaa Canal Development Plans



Development projects

Under construction/realization

- Renewal of Saimaa canal lower gates 15 M€
- Construction of Laitaatsalmi fairway 40 M€
- Construction of Jännevirta bridge 35 M€
- Development of ice-breaking (ice-breaking bow) 8 M€
- IBNext – New operative system for ice-breaking
- Baltice.org: Web-site for customers of ice-breaking
- Virtual and intelligent navigational aids, continuous renewal of systems and equipment

Under planning

- Saimaa Canal shipsize extension
 - Extending of locks
 - Water level raising
- Further development of ice-breaking (2 additional ice-breakers)
- Saimaa Portal: Info channel



Thank you!

